

# Anti-Cdc37 Rabbit antibody



Catalog Number: 168045

## Product name

Anti-Cdc37 Rabbit antibody

## Specificity

Human, Mouse, Rat

## Antibody description

Cdc37 Rabbit monoclonal antibody

## Preparation

Antigen: A synthetic peptide of human Cdc37

## Formulation

50nM Tris-Glycine(pH 7.4), 0.15M NaCl,  
40%Glycerol, 0.01% sodium azide and 0.05% BSA

## Storage

Store at 4°C short term. Store at -20°C long term.  
Avoid freeze / thaw cycle.

## Clonality

Monoclonal

## Ig Type

Rabbit IgG

## Applications

WB, IHC-P, FC, IP

## Dilutions

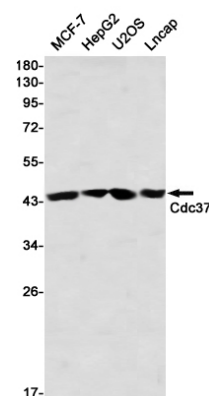
WB: 1/1000

IHC: 1/50

FC: 1/20

IP: 1/20

## Validations



Western blot detection of Cdc37 in  
MCF-7,HepG2,U2OS,Lncap using Cdc37 Rabbit  
mAb(1:1000 diluted)