

Anti-MEF2A+MEF2C Rabbit antibody



Catalog Number: 168032

Product name

Anti-MEF2A+MEF2C Rabbit antibody

Specificity

Human, Mouse, Rat

Antibody description

MEF2A+MEF2C Rabbit monoclonal antibody

Preparation

Antigen: A synthesized peptide derived from human MEF2A+MEF2C

Formulation

Rabbit IgG in phosphate buffered saline , pH 7.4, 150mM NaCl, 0.02% sodium azide and 50% glycerol.

Storage

Store at 4°C short term. Store at -20°C long term. Avoid freeze / thaw cycle.

Clonality

Monoclonal

Ig Type

Rabbit IgG

Applications

WB, IHC-P, ICC/IF, FC

Dilutions

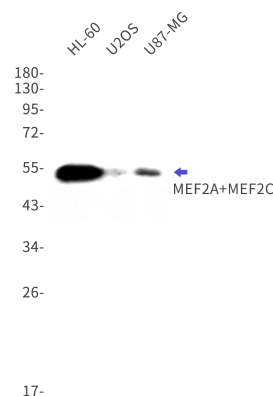
WB: 1/500-1/2000

IHC: 1/50-1/200

ICC/IF: 1/50-1/200

FC: 1/30

Validations



Western blot detection of MEF2A+MEF2C in HL-60,U2OS,U87-MG cell lysates using MEF2A+MEF2C Rabbit mAb(1:1000 diluted).Observed band size:51kDa.