

# Anti-IKZF3 Rabbit antibody



Catalog Number: 168028

## Product name

Anti-IKZF3 Rabbit antibody

## Specificity

Human, Mouse, Rat

## Antibody description

IKZF3 Rabbit monoclonal antibody

## Preparation

Antigen: A synthetic peptide of human IKZF3

## Formulation

50nM Tris-Glycine(pH 7.4), 0.15M NaCl,  
40%Glycerol, 0.01% sodium azide and 0.05% BSA

## Storage

Store at 4°C short term. Store at -20°C long term.  
Avoid freeze / thaw cycle.

## Clonality

Monoclonal

## Ig Type

Rabbit IgG

## Applications

WB, IHC-P, ICC/IF

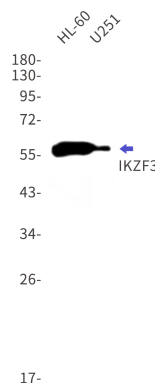
## Dilutions

WB: 1/1000

IHC: 1/20

ICC/IF: 1/50

## Validations



Western blot detection of IKZF3 in HL-60,U251 cell lysates using IKZF3 Rabbit mAb(1:1000 diluted).Predicted band size:58kDa.Observed band size:58kDa.