

Anti-Human Kappa Rabbit antibody



Catalog Number: 168020

Product name

Anti-Human Kappa Rabbit antibody

Specificity

Human

Antibody description

Human Kappa Rabbit monoclonal antibody

Preparation

Antigen: A synthesized peptide derived from human Human Kappa Chain

Formulation

Rabbit IgG in phosphate buffered saline , pH 7.4, 150mM NaCl, 0.02% sodium azide and 50% glycerol.

Storage

Store at 4°C short term. Store at -20°C long term. Avoid freeze / thaw cycle.

Clonality

Monoclonal

Ig Type

Rabbit IgG

Applications

WB, IHC-P, ICC/IF

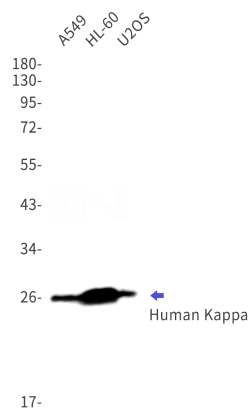
Dilutions

WB: 1/500-1/2000

IHC: 1/50-1/200

ICC/IF: 1/50-1/200

Validations



Western blot detection of Human Kappa in A549,HL-60,U2OS cell lysates using Human Kappa Rabbit mAb(1:1000 diluted).Observed band size:26kDa.