

Anti-SPT5 Rabbit antibody



Catalog Number: 168010

Product name

Anti-SPT5 Rabbit antibody

Specificity

Human, Mouse, Rat

Antibody description

SPT5 Rabbit monoclonal antibody

Preparation

Antigen: A synthetic peptide of human SPT5

Formulation

50nM Tris-Glycine(pH 7.4), 0.15M NaCl,
40%Glycerol, 0.01% sodium azide and 0.05% BSA

Storage

Store at 4°C short term. Store at -20°C long term.
Avoid freeze / thaw cycle.

Clonality

Monoclonal

Ig Type

Rabbit IgG

Applications

WB, IHC-P, ICC/IF

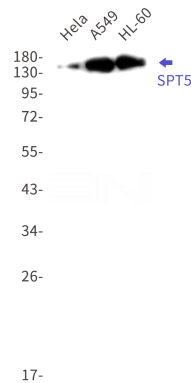
Dilutions

WB: 1/1000

IHC: 1/50

ICC/IF: 1/50

Validations



Western blot detection of SPT5 in HeLa,A549,HL-60 cell lysates using SPT5 Rabbit mAb(1:1000 diluted).Predicted band size:121kDa.Observed band size:150kDa.