

# Anti-HIF1AN/FIH-1 Rabbit antibody



Catalog Number: 168003

## Product name

Rabbit IgG

Anti-HIF1AN/FIH-1 Rabbit antibody

## Applications

## Specificity

WB, IHC-P, ICC/IF, FC

Human

## Dilutions

## Antibody description

WB: 1/1000-1/5000

HIF1AN/FIH-1 Rabbit monoclonal antibody

IHC: 1/501/20

## Preparation

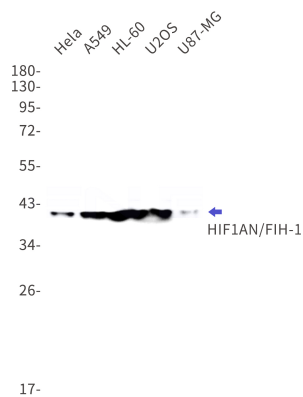
FC: 1/20

Antigen: A synthetic peptide of human HIF1AN/FIH-1

## Validations

## Formulation

50nM Tris-Glycine(pH 7.4), 0.15M NaCl, 40%Glycerol, 0.01% sodium azide and 0.05% BSA



## Storage

Store at 4°C short term. Store at -20°C long term. Avoid freeze / thaw cycle.

## Clonality

Monoclonal

Western blot detection of HIF1AN/FIH-1 in HeLa, A549, HL-60, U2OS, U87-MG cell lysates using HIF1AN/FIH-1 Rabbit mAb(1:1000 diluted). Predicted band size: 40kDa. Observed band size: 40kDa.

## Ig Type