

Anti-gamma Catenin Rabbit antibody



Catalog Number: 167971

Product name

Rabbit IgG

Anti-gamma Catenin Rabbit antibody

Applications

Specificity

WB, IHC-P, ICC/IF, FC

Human

Dilutions

Antibody description

WB: 1/2000

gamma Catenin Rabbit monoclonal antibody

IHC: 1/50

Preparation

ICC/IF: 1/100

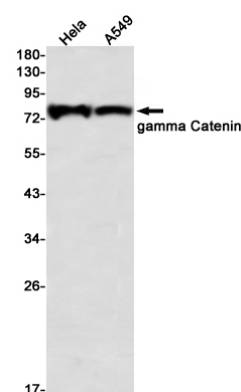
Antigen: Recombinant protein of human gamma Catenin

FC: 1/20

Formulation

50nM Tris-Glycine(pH 7.4), 0.15M NaCl, 40%Glycerol, 0.01% sodium azide and 0.05% BSA

Validations



Storage

Store at 4°C short term. Store at -20°C long term. Avoid freeze / thaw cycle.

Clonality

Monoclonal

Western blot detection of gamma Catenin in HeLa,A549 using gamma Catenin Rabbit mAb(1:1000 diluted)

Ig Type