

Anti-phospho-PTP1B (Ser378) Rabbit antibody



Catalog Number: 167965

Product name

Monoclonal

Anti-phospho-PTP1B (Ser378) Rabbit antibody

Ig Type

Specificity

IgG

Human

Applications

Antibody description

WB, IHC-P, ICC/IF

phospho-PTP1B (Ser378) Rabbit monoclonal antibody

Dilutions

WB: 1/2000-1/10000

Preparation

IHC: 1/501/50

Antigen: A synthetic phosphopeptide corresponding to residues surrounding Ser378 of human PTP1B

Validations

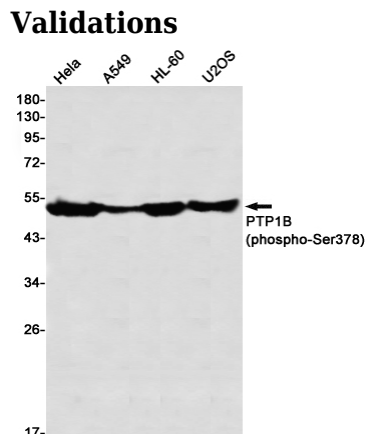
Formulation

50nM Tris-Glycine(pH 7.4), 0.15M NaCl, 40%Glycerol, 0.01% sodium azide and 0.05% BSA

Storage

Store at 4°C short term. Store at -20°C long term. Avoid freeze / thaw cycle.

Clonality



Western blot detection of PTP1B (phospho-Ser378) in HeLa,A549,HL-60,U2OS using PTP1B (phospho-Ser378) Rabbit mAb(1:1000 diluted)