

# Anti-phospho-Histone H3 (Ser10/Thr11) Rabbit antibody



Catalog Number: 167963

## Product name

Anti-phospho-Histone H3 (Ser10/Thr11) Rabbit antibody

## Specificity

Human, Mouse, Rat

## Antibody description

phospho-Histone H3 (Ser10/Thr11) Rabbit monoclonal antibody

## Preparation

Antigen: A synthetic phosphopeptide corresponding to residues surrounding Ser10/Thr11 of human Histone H3

## Formulation

50nM Tris-Glycine(pH 7.4), 0.15M NaCl, 40%Glycerol, 0.01% sodium azide and 0.05% BSA

## Storage

Store at 4°C short term. Store at -20°C long term. Avoid freeze / thaw cycle.

## Clonality

Monoclonal

## Ig Type

Rabbit IgG

## Applications

WB, IHC-P, ICC/IF, IP

## Dilutions

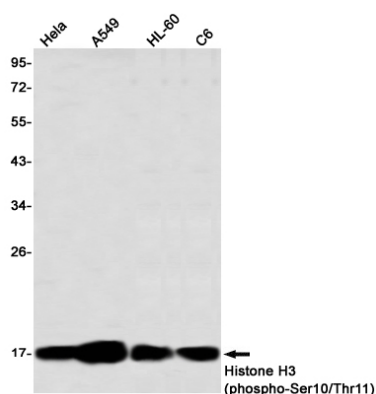
WB: 1/1000

IHC: 1/20

ICC/IF: 1/50-1/200

IP: 1/20

## Validations



Western blot detection of Histone H3 (phospho-Ser10/Thr11) in HeLa,A549,HL-60,C6 using Histone H3 (phospho-Ser10/Thr11) Rabbit mAb(1:1000 diluted)