

Anti-phospho-Src (Tyr529) Rabbit antibody



Catalog Number: 167947

Product name

Rabbit IgG

Anti-phospho-Src (Tyr529) Rabbit antibody

Applications

Specificity

WB, ICC/IF, IP

Human, Mouse, Rat

Dilutions

Antibody description

WB: 1/2000

phospho-Src (Tyr529) Rabbit monoclonal antibody

ICC/IF: 1/50

Preparation

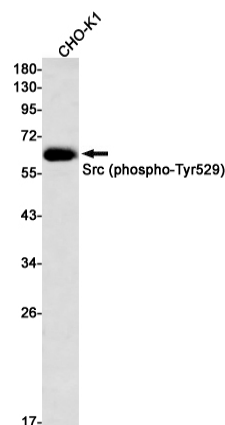
IP: 1/20

Antigen: A synthetic phosphopeptide corresponding to residues surrounding Tyr529 of human Src

Validations

Formulation

50nM Tris-Glycine(pH 7.4), 0.15M NaCl, 40%Glycerol, 0.01% sodium azide and 0.05% BSA



Storage

Store at 4°C short term. Store at -20°C long term. Avoid freeze / thaw cycle.

Clonality

Monoclonal

Western blot detection of Src (phospho-Tyr529) in CHO-K1 cell lysates using Src (phospho-Tyr529) Rabbit mAb(1:1000 diluted). Predicted band size:60kDa.Observed band size:60kDa.

Ig Type