

# Anti-SF3A3 Rabbit antibody



Catalog Number: 167928

## Product name

Anti-SF3A3 Rabbit antibody

## Specificity

Human, Mouse, Rat

## Antibody description

SF3A3 Rabbit monoclonal antibody

## Preparation

Antigen: A synthetic peptide of human SF3A3

## Formulation

50nM Tris-Glycine(pH 7.4), 0.15M NaCl, 40%Glycerol, 0.01% sodium azide and 0.05% BSA

## Storage

Store at 4°C short term. Store at -20°C long term. Avoid freeze / thaw cycle.

## Clonality

Monoclonal

## Ig Type

Rabbit IgG

## Applications

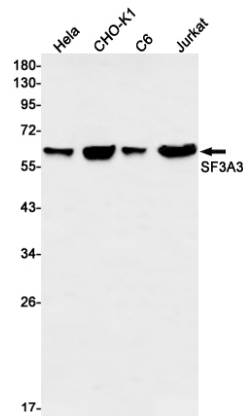
WB, FC

## Dilutions

WB: 1/1000-1/5000

FC: 1/20

## Validations



Western blot detection of SF3A3 in HeLa, CHO-K1, C6, Jurkat cell lysates using SF3A3 Rabbit mAb(1:1000 diluted). Predicted band size: 59kDa. Observed band size: 59kDa.