

Anti-phospho-PML Protein (Ser518) Rabbit antibody



Catalog Number: 167924

General Information

Product name:

Anti-phospho-PML Protein (Ser518) Rabbit antibody

Immunogen:

Applications:

WB, IHC-P

Specificity:

Human, Mouse

Antibody description:

phospho-PML Protein (Ser518) Rabbit monoclonal antibody

Properties

Preparation:

Antigen: A synthetic phosphopeptide corresponding to residues surrounding Ser518 of human PML Protein

Formulation:

50nM Tris-Glycine(pH 7.4), 0.15M NaCl, 40%Glycerol, 0.01% sodium azide and 0.05% BSA

Storage:

Store at 4°C short term. Store at -20°C long term. Avoid freeze / thaw cycle.

Clonality:

Monoclonal antibody

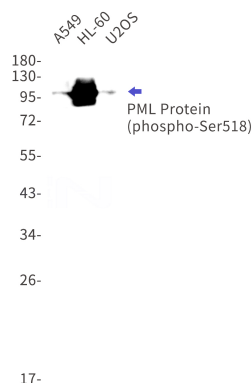
Ig Type:IgG

Applications

WB: 1/1000

IHC: 1/50

Validations



Western blot detection of phospho-PML Protein (Ser518) in A549,HL-60,U2OS cell lysates using phospho-PML Protein (Ser518) Rabbit mAb(1:1000 diluted).Predicted band size:98kDa.Observed band size:98-117kDa.