

# Anti-MK2 Rabbit antibody



Catalog Number: 167910

## Product name

Anti-MK2 Rabbit antibody

## Specificity

Human, Mouse, Rat

## Antibody description

MK2 Rabbit monoclonal antibody

## Preparation

Antigen: A synthetic peptide of human MK2

## Formulation

50nM Tris-Glycine(pH 7.4), 0.15M NaCl,  
40%Glycerol, 0.01% sodium azide and 0.05% BSA

## Storage

Store at 4°C short term. Store at -20°C long term.  
Avoid freeze / thaw cycle.

## Clonality

Monoclonal

## Ig Type

IgG

## Applications

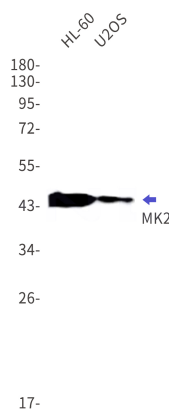
WB, IP

## Dilutions

WB: 1/1000

IP: 1/50

## Validations



Western blot detection of MK2 in HL-60,U2OS cell lysates using MK2 Rabbit mAb(1:1000 diluted).Predicted band size:46kDa.Observed band size:46kDa.