

# Anti-S100 alpha 6/PRA Rabbit antibody



Catalog Number: 167905

## Product name

Anti-S100 alpha 6/PRA Rabbit antibody

## Specificity

Human, Mouse, Rat

## Antibody description

S100 alpha 6/PRA Rabbit monoclonal antibody

## Preparation

Antigen: Recombinant protein of human S100 alpha 6/PRA

## Formulation

50nM Tris-Glycine(pH 7.4), 0.15M NaCl, 40%Glycerol, 0.01% sodium azide and 0.05% BSA

## Storage

Store at 4°C short term. Store at -20°C long term. Avoid freeze / thaw cycle.

## Clonality

Monoclonal

## Ig Type

Rabbit IgG

## Applications

WB, ICC/IF, FC, IP

## Dilutions

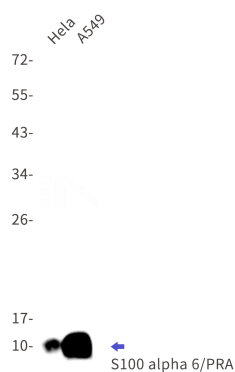
WB: 1/1000

ICC/IF: 1/50

FC: 1/20-1/100

IP: 1/20

## Validations



Western blot detection of S100 alpha 6/PRA in HeLa,A549 cell lysates using S100 alpha 6/PRA Rabbit mAb(1:1000 diluted).Predicted band size:10kDa.Observed band size:10kDa.