

Anti-MCM4 Rabbit antibody



Catalog Number: 167801

Product name

Anti-MCM4 Rabbit antibody

Specificity

Human, Mouse

Antibody description

MCM4 Rabbit monoclonal antibody

Preparation

Antigen: A synthetic peptide of human MCM4

Formulation

50nM Tris-Glycine(pH 7.4), 0.15M NaCl, 40%Glycerol, 0.01% sodium azide and 0.05% BSA

Storage

Store at 4°C short term. Store at -20°C long term. Avoid freeze / thaw cycle.

Clonality

Monoclonal

Ig Type

Rabbit IgG

Applications

WB, FC, IP

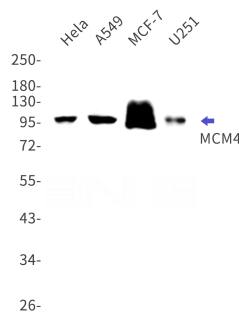
Dilutions

WB: 1/2000-1/10000

FC: 1/20-1/100

IP: 1/20

Validations



Western blot detection of MCM4 in HeLa,A549,MCF-7,U251 cell lysates using MCM4 Rabbit mAb(1:1000 diluted).Predicted band size:97kDa.Observed band size:97kDa.