

Anti-RBM3 Rabbit antibody



Catalog Number: 167791

Product name

Anti-RBM3 Rabbit antibody

Specificity

Human, Mouse, Rat

Antibody description

RBM3 Rabbit monoclonal antibody

Preparation

Antigen: A synthetic peptide of human RBM3

Formulation

50nM Tris-Glycine(pH 7.4), 0.15M NaCl, 40%Glycerol, 0.01% sodium azide and 0.05% BSA

Storage

Store at 4°C short term. Store at -20°C long term. Avoid freeze / thaw cycle.

Clonality

Monoclonal

Ig Type

Rabbit IgG

Applications

WB, ICC/IF, FC

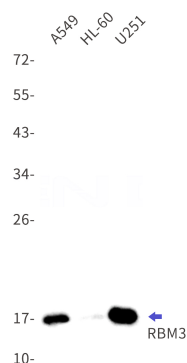
Dilutions

WB: 1/1000

ICC/IF: 1/50

FC: 1/20

Validations



Western blot detection of RBM3 in A549,HL-60,U251 cell lysates using RBM3 Rabbit mAb(1:1000 diluted).Predicted band size:17kDa.Observed band size:17kDa.