

# Anti-PPP2R5E Rabbit antibody



Catalog Number: 167785

## Product name

Anti-PPP2R5E Rabbit antibody

## Specificity

Human, Mouse, Rat

## Antibody description

PPP2R5E Rabbit monoclonal antibody

## Preparation

Antigen: A synthetic peptide of human PPP2R5E

## Formulation

50nM Tris-Glycine(pH 7.4), 0.15M NaCl,  
40%Glycerol, 0.01% sodium azide and 0.05% BSA

## Storage

Store at 4°C short term. Store at -20°C long term.  
Avoid freeze / thaw cycle.

## Clonality

Monoclonal

## Ig Type

Rabbit IgG

## Applications

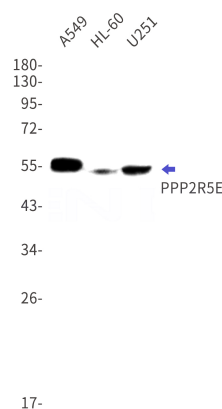
WB, ICC/IF

## Dilutions

WB: 1/1000

ICC/IF: 1/100

## Validations



Western blot detection of PPP2R5E in A549,HL-60,U251 cell lysates using PPP2R5E Rabbit mAb(1:1000 diluted).Predicted band size:55kDa.Observed band size:55kDa.