

Anti-IgG4 Rabbit antibody



Catalog Number: 167745

Product name

Anti-IgG4 Rabbit antibody

Specificity

Human

Antibody description

IgG4 Rabbit monoclonal antibody

Preparation

Antigen: A synthesized peptide derived from human IgG4

Formulation

Rabbit IgG in phosphate buffered saline , pH 7.4, 150mM NaCl, 0.02% sodium azide and 50% glycerol.

Storage

Store at 4°C short term. Store at -20°C long term. Avoid freeze / thaw cycle.

Clonality

Monoclonal

Ig Type

Rabbit IgG

Applications

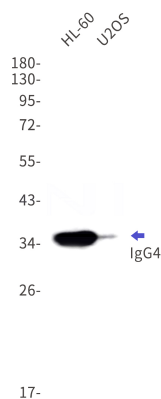
WB, IHC-P

Dilutions

WB: 1/1000-1/2000

IHC: 1/500-1/1000

Validations



Western blot detection of IgG4 in HL-60,U2OS cell lysates using IgG4 Rabbit mAb(1:1000 diluted).Observed band size:36kDa.