

Anti-MonoMethyl-Histone H3 (Lys18) Rabbit antibody



Catalog Number: 167743

Product name

Anti-MonoMethyl-Histone H3 (Lys18) Rabbit antibody

Specificity

Human, Mouse, Rat

Antibody description

MonoMethyl-Histone H3 (Lys18) Rabbit monoclonal antibody

Preparation

Antigen: A synthesized peptide derived from human Histone H3 (mono methyl K18)

Formulation

Rabbit IgG in phosphate buffered saline , pH 7.4, 150mM NaCl, 0.02% sodium azide and 50% glycerol.

Storage

Store at 4°C short term. Store at -20°C long term. Avoid freeze / thaw cycle.

Clonality

Monoclonal

Ig Type

Rabbit IgG

Applications

WB, IHC-P, ICC/IF

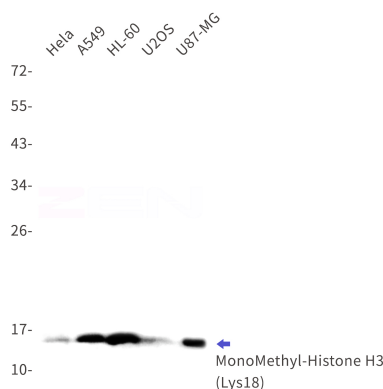
Dilutions

WB: 1/500-1/2000

IHC: 1/500-1/2000

ICC/IF: 1/100-1/500

Validations



Western blot detection of MonoMethyl-Histone H3 (Lys18) in HeLa, A549, HL-60, U2OS, U87-MG cell lysates using MonoMethyl-Histone H3 (Lys18) Rabbit mAb(1:1000 diluted). Observed band size: 15kDa.