

Anti-IL-26 Rabbit antibody



Catalog Number: 167740

Product name

Anti-IL-26 Rabbit antibody

Specificity

Human

Antibody description

IL-26 Rabbit monoclonal antibody

Preparation

Antigen: A synthetic peptide of human IL-26

Formulation

50nM Tris-Glycine(pH 7.4), 0.15M NaCl,
40%Glycerol, 0.01% sodium azide and 0.05% BSA

Storage

Store at 4°C short term. Store at -20°C long term.
Avoid freeze / thaw cycle.

Clonality

Monoclonal

Ig Type

Rabbit IgG

Applications

WB, IHC-P, ICC/IF, IP

Dilutions

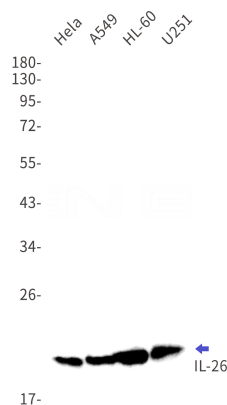
WB: 1/1000

IHC: 1/100

ICC/IF: 1/20

IP: 1/20

Validations



Western blot detection of IL-26 in HeLa, A549, HL-60, U251 cell lysates using IL-26 Rabbit mAb(1:1000 diluted). Predicted band size: 20kDa. Observed band size: 20kDa.