

# Anti-Meckelin Rabbit antibody



Catalog Number: 167736

## Product name

Anti-Meckelin Rabbit antibody

## Specificity

Human, Mouse, Rat

## Antibody description

Meckelin Rabbit monoclonal antibody

## Preparation

Antigen: A synthetic peptide of human Meckelin

## Formulation

50nM Tris-Glycine(pH 7.4), 0.15M NaCl,  
40%Glycerol, 0.01% sodium azide and 0.05% BSA

## Storage

Store at 4°C short term. Store at -20°C long term.  
Avoid freeze / thaw cycle.

## Clonality

Monoclonal

## Ig Type

Rabbit IgG

## Applications

WB, IHC-P, ICC/IF, FC

## Dilutions

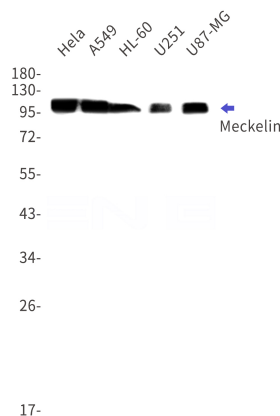
WB: 1/1000

IHC: 1/50

ICC/IF: 1/200

FC: 1/50

## Validations



Western blot detection of Meckelin in HeLa,A549,HL-60,U251,U87-MG cell lysates using Meckelin Rabbit mAb(1:1000 diluted).Predicted band size:112kDa.Observed band size:112kDa.