

Anti-phospho-Jun (Ser73)/JunD (Ser100) Rabbit antibody



Catalog Number: 167734

Product name

Rabbit IgG

Anti-phospho-Jun (Ser73)/JunD (Ser100) Rabbit antibody

Applications

WB, IHC-P, IP

Specificity

Human, Mouse, Rat

Dilutions

WB: 1/1000

Antibody description

phospho-Jun (Ser73)/JunD (Ser100) Rabbit monoclonal antibody

IHC: 1/200

IP: 1/20

Preparation

Antigen: A synthetic phosphopeptide corresponding to residues surrounding Ser73 of human Jun

Validations

Formulation

50nM Tris-Glycine(pH 7.4), 0.15M NaCl, 40%Glycerol, 0.01% sodium azide and 0.05% BSA

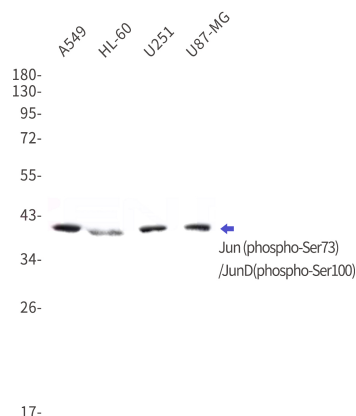
Storage

Store at 4°C short term. Store at -20°C long term. Avoid freeze / thaw cycle.

Clonality

Monoclonal

Ig Type



Western blot detection of Jun (phospho-Ser73)/JunD (phospho-Ser100) in A549,HL-60,U251,U87-MG cell lysates using Jun (phospho-Ser73)/JunD (phospho-Ser100) Rabbit mAb(1:1000 diluted).Predicted band size:35,36kDa.Observed band size:38,42,48kDa.