

Anti-14-3-3 gamma/YWHAG Rabbit antibody



Catalog Number: 167720

Product name

Anti-14-3-3 gamma/YWHAG Rabbit antibody

Specificity

Human, Mouse, Rat

Antibody description

14-3-3 gamma/YWHAG Rabbit monoclonal antibody

Preparation

Antigen: A synthetic peptide of human 14-3-3 gamma/YWHAG

Formulation

50nM Tris-Glycine(pH 7.4), 0.15M NaCl, 40%Glycerol, 0.01% sodium azide and 0.05% BSA

Storage

Store at 4°C short term. Store at -20°C long term. Avoid freeze / thaw cycle.

Clonality

Monoclonal

Ig Type

Rabbit IgG

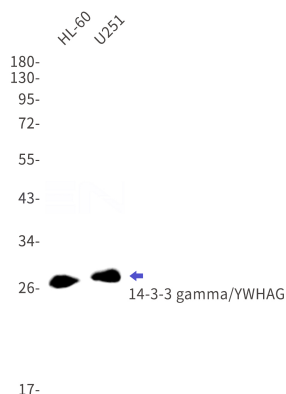
Applications

WB

Dilutions

WB: 1/1000

Validations



Western blot detection of 14-3-3 gamma/YWHAG in HL-60,U251 cell lysates using 14-3-3 gamma/YWHAG Rabbit mAb(1:1000 diluted).Predicted band size:28kDa.Observed band size:28kDa.