

Anti-phospho-NDRG1 (Ser330) Rabbit antibody



Catalog Number: 167687

Product name

IgG

Anti-phospho-NDRG1 (Ser330) Rabbit antibody

Applications

Specificity

WB, IHC-P, ICC/IF, IP

Human, Mouse, Rat

Dilutions

Antibody description

WB: 1/2000-1/10000

phospho-NDRG1 (Ser330) Rabbit monoclonal antibody

IHC: 1/50

ICC/IF: 1/20

Preparation

IP: 1/20

Antigen: A synthetic phosphopeptide corresponding to residues surrounding Ser330 of human NDRG1

Validations

Formulation

50nM Tris-Glycine(pH 7.4), 0.15M NaCl, 40%Glycerol, 0.01% sodium azide and 0.05% BSA

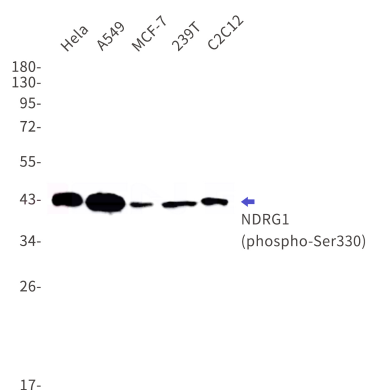
Storage

Store at 4°C short term. Store at -20°C long term. Avoid freeze / thaw cycle.

Clonality

Monoclonal

Ig Type



Western blot detection of phospho-NDRG1(Ser330) in HeLa,A549,MCF-7,239T,C2C12 cell lysates using phospho-NDRG1(Ser330) Rabbit mAb(1:1000 diluted).Predicted band size:43kDa.Observed band size:43kDa.