

Anti-phospho-beta Arrestin 1 (Ser412) Rabbit antibody



Catalog Number: 167686

Product name

IgG

Anti-phospho-beta Arrestin 1 (Ser412) Rabbit antibody

Applications

WB, IHC-P, ICC/IF, IP

Specificity

Human, Mouse, Rat

Dilutions

WB: 1/5000

Antibody description

phospho-beta Arrestin 1 (Ser412) Rabbit monoclonal antibody

IHC: 1/100

ICC/IF: 1/50

IP: 1/20

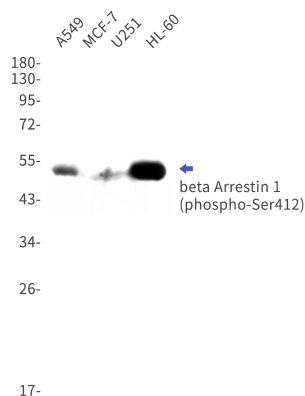
Preparation

Antigen: A synthetic phosphopeptide corresponding to residues surrounding Ser412 of human beta Arrestin 1

Validations

Formulation

50nM Tris-Glycine(pH 7.4), 0.15M NaCl, 40%Glycerol, 0.01% sodium azide and 0.05% BSA



Storage

Store at 4°C short term. Store at -20°C long term. Avoid freeze / thaw cycle.

Clonality

Monoclonal

Ig Type

Western blot detection of phospho-beta Arrestin 1 (Ser412) in A549, MCF-7, U251, HL-60 cell lysates using phospho-beta Arrestin 1 (Ser412) Rabbit mAb(1:1000 diluted). Predicted band size: 50kDa. Observed band size: 50kDa.