

Anti-p40-phox Rabbit antibody



Catalog Number: 167669

Product name

Anti-p40-phox Rabbit antibody

Specificity

Human

Antibody description

p40-phox Rabbit monoclonal antibody

Preparation

Antigen: A synthetic peptide of human p40-phox

Formulation

50nM Tris-Glycine(pH 7.4), 0.15M NaCl, 40%Glycerol, 0.01% sodium azide and 0.05% BSA

Storage

Store at 4°C short term. Store at -20°C long term. Avoid freeze / thaw cycle.

Clonality

Monoclonal

Ig Type

Rabbit IgG

Applications

WB, IHC-P, ICC/IF, FC, IP

Dilutions

WB: 1/2000-1/10000

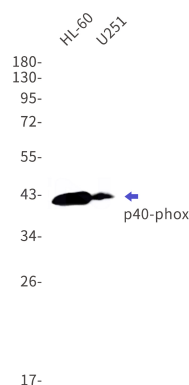
IHC: 1/50

ICC/IF: 1/50

FC: 1/20

IP: 1/20

Validations



Western blot detection of p40-phox in HL-60,U251 cell lysates using p40-phox Rabbit mAb(1:1000 diluted).Predicted band size:39kDa.Observed band size:40kDa.