

Anti-LYRIC/AEG1 Rabbit antibody



Catalog Number: 167656

Product name

Anti-LYRIC/AEG1 Rabbit antibody

Specificity

Human, Mouse, Rat

Antibody description

LYRIC/AEG1 Rabbit monoclonal antibody

Preparation

Antigen: Recombinant protein of human LYRIC/AEG1

Formulation

50nM Tris-Glycine(pH 7.4), 0.15M NaCl, 40%Glycerol, 0.01% sodium azide and 0.05% BSA

Storage

Store at 4°C short term. Store at -20°C long term. Avoid freeze / thaw cycle.

Clonality

Monoclonal

Ig Type

IgG

Applications

WB, IHC-P, ICC/IF, FC, IP

Dilutions

WB: 1/1000

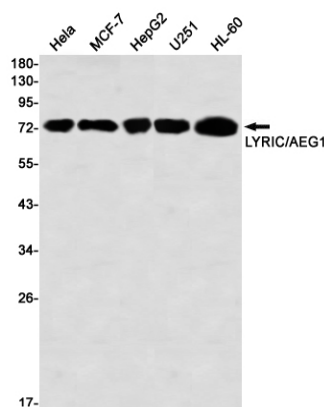
IHC: 1/200

ICC/IF: 1/20

FC: 1/50

IP: 1/20

Validations



Western blot detection of LYRIC/AEG1 in HeLa, MCF-7, HepG2, U251, HL-60 using LYRIC/AEG1 Rabbit mAb(1:1000 diluted)