

Anti-phospho-Smad2 (Ser250) Rabbit antibody



Catalog Number: 167626

Product name

Monoclonal

Anti-phospho-Smad2 (Ser250) Rabbit antibody

Ig Type

Specificity

IgG

Human, Mouse, Rat

Applications

Antibody description

WB, FC

phospho-Smad2 (Ser250) Rabbit monoclonal antibody

Dilutions

WB: 1/1000

Preparation

FC: 1/20

Antigen: A synthetic phosphopeptide corresponding to residues surrounding Ser250 of human Smad2

Validations

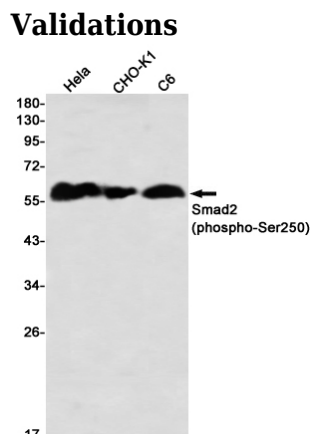
Formulation

50nM Tris-Glycine(pH 7.4), 0.15M NaCl, 40%Glycerol, 0.01% sodium azide and 0.05% BSA

Storage

Store at 4°C short term. Store at -20°C long term. Avoid freeze / thaw cycle.

Clonality



Western blot detection of Smad2 (phospho-Ser250) in HeLa, CHO-K1, C6 using Smad2 (phospho-Ser250) Rabbit mAb(1:1000 diluted)