

# Anti-phospho-Hormone sensitive lipase/HSL (Ser855) Rabbit antibody



Catalog Number: 167624

## Product name

Monoclonal

Anti-phospho-Hormone sensitive lipase/HSL (Ser855) Rabbit antibody

## Ig Type

Rabbit IgG

## Specificity

Human, Mouse

## Applications

WB

## Antibody description

phospho-Hormone sensitive lipase/HSL (Ser855) Rabbit monoclonal antibody

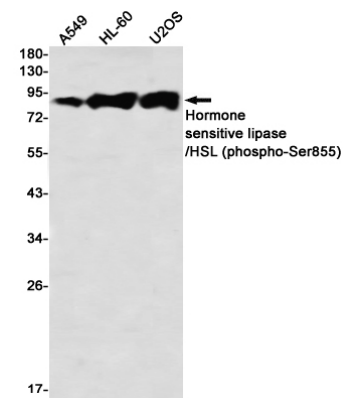
## Dilutions

WB: 1/1000

## Preparation

Antigen: A synthetic phosphopeptide corresponding to residues surrounding Ser855 of human Hormone sensitive lipase/HSL

## Validations



## Formulation

50nM Tris-Glycine(pH 7.4), 0.15M NaCl, 40%Glycerol, 0.01% sodium azide and 0.05% BSA

## Storage

Store at 4°C short term. Store at -20°C long term. Avoid freeze / thaw cycle.

Western blot detection of Hormone sensitive lipase/HSL (phospho-Ser855) in A549,HL-60,U2OS using Hormone sensitive lipase/HSL (phospho-Ser855) Rabbit mAb(1:1000 diluted)

## Clonality