

Anti-RBM43 Rabbit antibody



Catalog Number: 167620

Product name

Anti-RBM43 Rabbit antibody

Specificity

Human

Antibody description

RBM43 Rabbit monoclonal antibody

Preparation

Antigen: Recombinant protein of human RBM43

Formulation

50nM Tris-Glycine(pH 7.4), 0.15M NaCl, 40%Glycerol, 0.01% sodium azide and 0.05% BSA

Storage

Store at 4°C short term. Store at -20°C long term. Avoid freeze / thaw cycle.

Clonality

Monoclonal

Ig Type

Rabbit IgG

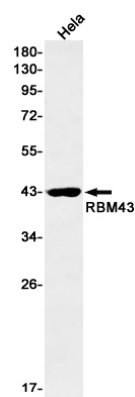
Applications

WB

Dilutions

WB: 1/1000-1/5000

Validations



Western blot detection of RBM43 in HeLa cell lysates using RBM43 Rabbit mAb(1:1000 diluted).Predicted band size:41kDa.Observed band size:41kDa.