

# Anti-Mitofusin 1 Rabbit antibody



Catalog Number: 167614

## Product name

Anti-Mitofusin 1 Rabbit antibody

## Specificity

Mouse, Rat

## Antibody description

Mitofusin 1 Rabbit monoclonal antibody

## Preparation

Antigen: A synthetic peptide of mouse Mitofusin 1

## Formulation

50nM Tris-Glycine(pH 7.4), 0.15M NaCl, 40%Glycerol, 0.01% sodium azide and 0.05% BSA

## Storage

Store at 4°C short term. Store at -20°C long term. Avoid freeze / thaw cycle.

## Clonality

Monoclonal

## Ig Type

Rabbit IgG

## Applications

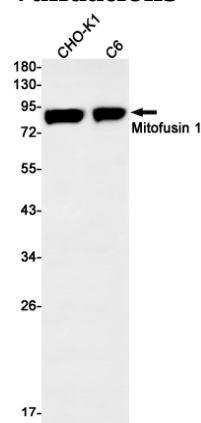
WB, IP

## Dilutions

WB: 1/1000

IP: 1/20

## Validations



Western blot detection of Mitofusin 1 in CHO-K1, C6 cell lysates using Mitofusin 1 Rabbit mAb(1:1000 diluted). Predicted band size: 84kDa. Observed band size: 84kDa.