

# Anti-PTP4A2/PRL2 Rabbit antibody



Catalog Number: 167613

## Product name

Anti-PTP4A2/PRL2 Rabbit antibody

## Ig Type

IgG

## Specificity

Human, Mouse, Rat

## Applications

WB, IP

## Antibody description

PTP4A2/PRL2 Rabbit monoclonal antibody

## Dilutions

WB: 1/1000

IP: 1/20

## Preparation

Antigen: A synthetic peptide of human PTP4A2/PRL2

## Validations

## Formulation

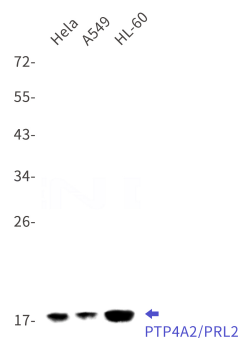
50nM Tris-Glycine(pH 7.4), 0.15M NaCl, 40%Glycerol, 0.01% sodium azide and 0.05% BSA

## Storage

Store at 4°C short term. Store at -20°C long term. Avoid freeze / thaw cycle.

## Clonality

Monoclonal



Western blot detection of PTP4A2/PRL2 in HeLa,A549,HL-60 cell lysates using PTP4A2/PRL2 Rabbit mAb(1:1000 diluted).Predicted band size:19kDa.Observed band size:19kDa.