

Anti-CEP55 Rabbit antibody



Catalog Number: 167590

Product name

Anti-CEP55 Rabbit antibody

Specificity

Human, Mouse, Rat

Antibody description

CEP55 Rabbit monoclonal antibody

Preparation

Antigen: A synthetic peptide of human CEP55

Formulation

50nM Tris-Glycine(pH 7.4), 0.15M NaCl,
40%Glycerol, 0.01% sodium azide and 0.05% BSA

Storage

Store at 4°C short term. Store at -20°C long term.
Avoid freeze / thaw cycle.

Clonality

Monoclonal

Ig Type

Rabbit IgG

Applications

WB, IHC-P, ICC/IF, FC

Dilutions

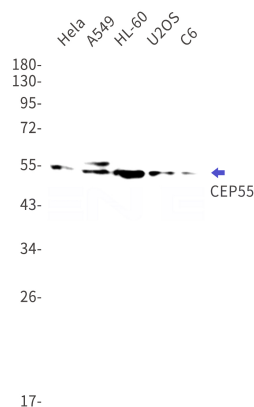
WB: 1/5000

IHC: 1/50

ICC/IF: 1/100

FC: 1/20

Validations



Western blot detection of CEP55 in HeLa, A549, HL-60, U2OS, C6 cell lysates using CEP55 Rabbit mAb(1:1000 diluted). Predicted band size: 54kDa. Observed band size: 55kDa.