

Anti-MSH6 Rabbit antibody



Catalog Number: 167582

Product name

Anti-MSH6 Rabbit antibody

Specificity

Human

Antibody description

MSH6 Rabbit monoclonal antibody

Preparation

Antigen: A synthetic peptide of human MSH6

Formulation

50nM Tris-Glycine(pH 7.4), 0.15M NaCl,
40%Glycerol, 0.01% sodium azide and 0.05% BSA

Storage

Store at 4°C short term. Store at -20°C long term.
Avoid freeze / thaw cycle.

Clonality

Monoclonal

Ig Type

IgG

Applications

WB, IHC-P, ICC/IF, FC, IP

Dilutions

WB: 1/1000

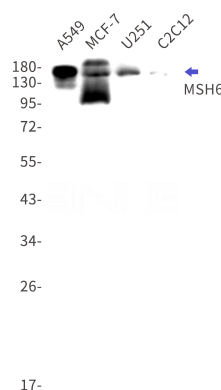
IHC: 1/200

ICC/IF: 1/20

FC: 1/100

IP: 1/20

Validations



Western blot detection of MSH6 in A549, MCF-7, U251, C2C12 cell lysates using MSH6 Rabbit mAb(1:1000 diluted). Predicted band size: 163kDa. Observed band size: 163kDa.