

# Anti-XRCC1 Rabbit antibody



Catalog Number: 167578

## Product name

Anti-XRCC1 Rabbit antibody

## Specificity

Human, Mouse, Rat

## Antibody description

XRCC1 Rabbit monoclonal antibody

## Preparation

Antigen: A synthetic peptide of human XRCC1

## Formulation

50nM Tris-Glycine(pH 7.4), 0.15M NaCl,  
40%Glycerol, 0.01% sodium azide and 0.05% BSA

## Storage

Store at 4°C short term. Store at -20°C long term.  
Avoid freeze / thaw cycle.

## Clonality

Monoclonal

## Ig Type

IgG

## Applications

WB, IHC-P, ICC/IF

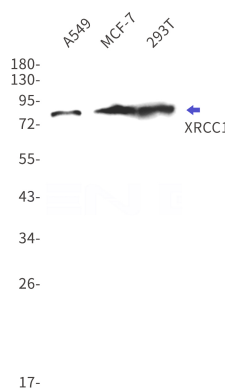
## Dilutions

WB: 1/1000

IHC: 1/50

ICC/IF: 1/50

## Validations



Western blot detection of XRCC1 in A549, MCF-7, 293T cell lysates using XRCC1 Rabbit mAb(1:1000 diluted). Predicted band size: 70kDa. Observed band size: 82kDa.