

Anti-ING1 Rabbit antibody



Catalog Number: 167573

Product name

Anti-ING1 Rabbit antibody

Specificity

Human, Mouse, Rat

Antibody description

ING1 Rabbit monoclonal antibody

Preparation

Antigen: A synthetic peptide of human ING1

Formulation

50nM Tris-Glycine(pH 7.4), 0.15M NaCl,
40%Glycerol, 0.01% sodium azide and 0.05% BSA

Storage

Store at 4°C short term. Store at -20°C long term.
Avoid freeze / thaw cycle.

Clonality

Monoclonal

Ig Type

Rabbit IgG

Applications

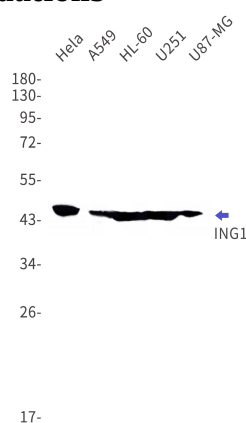
WB, FC

Dilutions

WB: 1/1000

FC: 1/20

Validations



Western blot detection of ING1 in HeLa,A549,HL-60,U251,U87-MG cell lysates using ING1 Rabbit mAb(1:1000 diluted).Predicted band size:47kDa.Observed band size:47kDa.