

Anti-ITCH/AIP4 Rabbit antibody



Catalog Number: 167572

Product name

Anti-ITCH/AIP4 Rabbit antibody

Specificity

Human, Mouse, Rat

Antibody description

ITCH/AIP4 Rabbit monoclonal antibody

Preparation

Antigen: A synthetic peptide of human ITCH/AIP4

Formulation

50nM Tris-Glycine(pH 7.4), 0.15M NaCl,
40%Glycerol, 0.01% sodium azide and 0.05% BSA

Storage

Store at 4°C short term. Store at -20°C long term.
Avoid freeze / thaw cycle.

Clonality

Monoclonal

Ig Type

Rabbit IgG

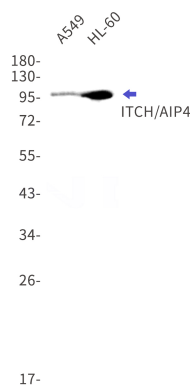
Applications

WB

Dilutions

WB: 1/1000

Validations



Western blot detection of ITCH/AIP4 in A549,HL-60 cell lysates using ITCH/AIP4 Rabbit mAb(1:1000 diluted).Predicted band size:103kDa.Observed band size:103kDa.