

Anti-Extracellular matrix protein 1 Rabbit antibody



Catalog Number: 167562

Product name

WB: 1/1000

Anti-Extracellular matrix protein 1 Rabbit antibody

IHC: 1/20

Specificity

ICC/IF: 1/20

IP: 1/20

Human, Rat

Validations

Antibody description

Extracellular matrix protein 1 Rabbit polyclonal antibody

Preparation

Antigen: A synthetic peptide of human Extracellular matrix protein 1

Formulation

Supplied in 50nM Tris-Glycine(pH 7.4), 0.15M NaCl, 40%Glycerol, 0.01% sodium azide and 0.05% BSA.

Storage

Store at -20°C. Stable for 12 months from date of receipt.

Clonality

Polyclonal

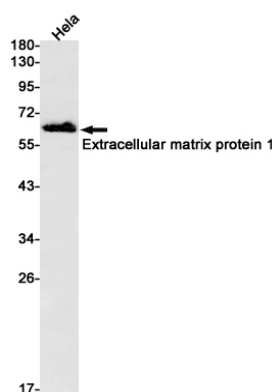
Ig Type

Rabbit IgG

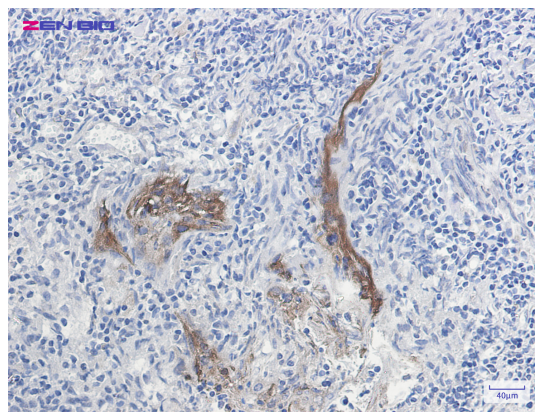
Applications

WB, IHC-P, ICC/IF, IP

Dilutions



Western blot detection of Extracellular matrix protein 1 in HeLa cell lysates using Extracellular matrix protein 1 Rabbit pAb(1:1000 diluted). Predicted band size:61kDa.Observed band size:61kDa.



Immunohistochemistry of Extracellular matrix protein 1 in paraffin-embedded Human tonsil using Extracellular matrix protein 1 Rabbit pAb at dilution 1/20