

# Anti-Phospho-MSK1 (Ser376) Rabbit antibody



Catalog Number: 167561

## Product name

Anti-Phospho-MSK1 (Ser376) Rabbit antibody

## Specificity

Human, Rat

## Antibody description

Phospho-MSK1 (Ser376) Rabbit polyclonal antibody

## Preparation

Antigen: A synthetic phosphopeptide corresponding to residues surrounding Ser376 of human MSK1

## Formulation

Supplied in 50nM Tris-Glycine(pH 7.4), 0.15M NaCl, 40%Glycerol, 0.01% sodium azide and 0.05% BSA.

## Storage

Store at -20°C. Stable for 12 months from date of receipt.

## Clonality

Polyclonal

## Ig Type

Rabbit IgG

## Applications

WB, IHC-P, IP

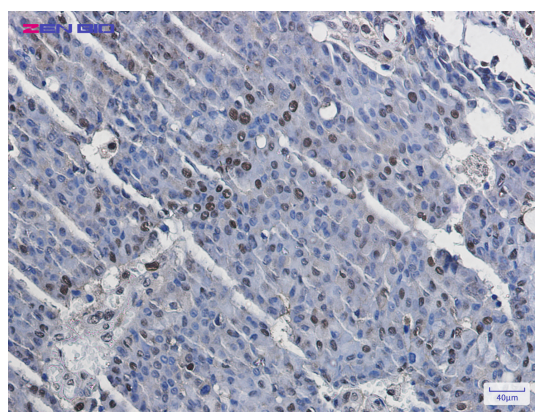
## Dilutions

WB: 1/1000

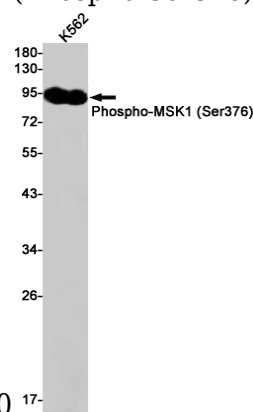
IHC: 1/20

IP: 1/20

## Validations



Immunohistochemistry of MSK1 (Phospho-Ser376) in paraffin-embedded Human breast cancer tissue using MSK1 (Phospho-Ser376) Rabbit pAb at



Western blot detection of Phospho-MSK1 (Ser376) in K562 cell lysates using Phospho-MSK1 (Ser376) Rabbit pAb(1:1000 diluted).Predicted band size:90kDa.Observed band size:90kDa.