

# Anti-CCR7 Rabbit antibody



Catalog Number: 167557

## Product name

Anti-CCR7 Rabbit antibody

## Specificity

Human, Mouse, Rat

## Antibody description

CCR7 Rabbit polyclonal antibody

## Preparation

Antigen: A synthesized peptide derived from human CCR7

## Formulation

Rabbit IgG in phosphate buffered saline , pH 7.4, 150mM NaCl, 0.02% sodium azide and 50% glycerol.

## Storage

Store at 4°C short term. Store at -20°C long term. Avoid freeze / thaw cycle.

## Clonality

Polyclonal

## Ig Type

Rabbit IgG

## Applications

WB, IHC-P, ICC/IF, IP

## Dilutions

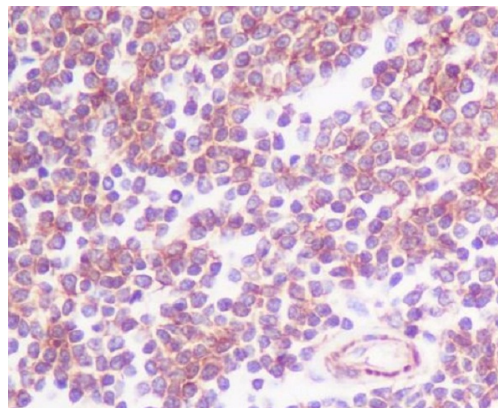
WB: 1/500-1/2000

IHC: 1/50-1/200

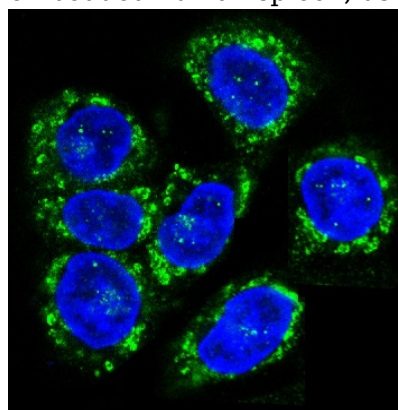
ICC/IF: 1/50-1/200

IP: 1/50

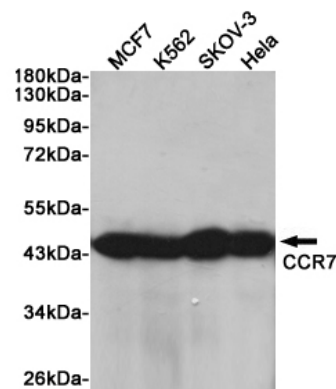
## Validations



Immunohistochemical analysis of paraffin-embedded human spleen, using CCR7 Antibody.



Immunofluorescent analysis of HeLa cells, using



CCR7 Antibody .

Western blot analysis of extracts from CCR7 in MCF7, K562, SKOV-3 and HeLa cells using CCR7 Rabbit pAb at 1:1000 dilution. Predicted band size: 43kDa. Observed band size: 43kDa.