

# Anti-PSF1 Rabbit antibody



Catalog Number: 167555

## Product name

Anti-PSF1 Rabbit antibody

## Specificity

Human, Mouse, Rat

## Antibody description

PSF1 Rabbit polyclonal antibody

## Preparation

Antigen: A synthetic peptide of human PSF1

## Formulation

Supplied in 50nM Tris-Glycine(pH 7.4), 0.15M NaCl, 40%Glycerol, 0.01% sodium azide and 0.05% BSA.

## Storage

Store at -20°C. Stable for 12 months from date of receipt.

## Clonality

Polyclonal

## Ig Type

Rabbit IgG

## Applications

WB, ICC/IF, IP

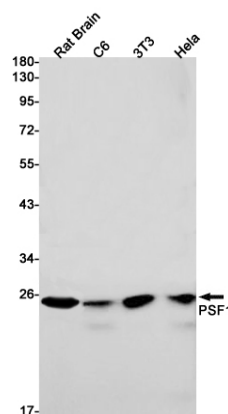
## Dilutions

WB: 1/2000-1/10000

ICC/IF: 1/50

IP: 1/20

## Validations



Western blot detection of PSF1 in Rat Brain, C6, 3T3, HeLa cell lysates using PSF1 Rabbit pAb(1:1000 diluted). Predicted band size: 23kDa. Observed band size: 23kDa.