

# Anti-Phospho-IKB alpha (Ser32) Rabbit antibody



Catalog Number: 167542

## Product name

Anti-Phospho-IKB alpha (Ser32) Rabbit antibody

## Ig Type

Rabbit IgG

## Specificity

Human

## Applications

WB, IP

## Antibody description

Phospho-IKB alpha (Ser32) Rabbit polyclonal antibody

## Dilutions

WB: 1/1000

IP: 1/20

## Preparation

Antigen: A synthetic phosphopeptide corresponding to residues surrounding Ser32 of human IKB alpha

## Formulation

Supplied in 50nM Tris-Glycine(pH 7.4), 0.15M NaCl, 40%Glycerol, 0.01% sodium azide and 0.05% BSA.

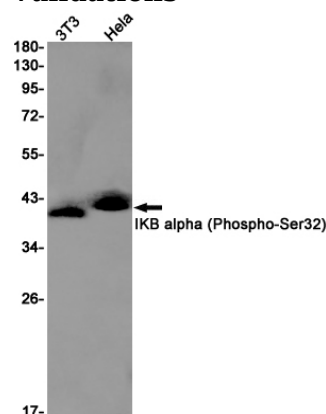
## Storage

Store at -20°C. Stable for 12 months from date of receipt.

## Clonality

Polyclonal

## Validations



Western blot detection of IKB alpha (Phospho-Ser32) in 3T3, HeLa cell lysates using IKB alpha (Phospho-Ser32) Rabbit pAb(1:1000 diluted). Predicted band size: 36kDa. Observed band size: 36kDa.