

# Anti-Phospho-Tau (Ser202/Thr205) Rabbit antibody



Catalog Number: 167541

## General Information

### Product name:

Anti-Phospho-Tau (Ser202/Thr205) Rabbit antibody

### Immunogen:

### Applications:

WB, IP

### Specificity:

Human

### Antibody description:

Phospho-Tau (Ser202/Thr205) Rabbit polyclonal antibody

## Properties

### Preparation:

Antigen: A synthetic phosphopeptide corresponding to residues surrounding Ser202/Thr205 of human Tau

### Formulation:

Supplied in 50nM Tris-Glycine(pH 7.4), 0.15M NaCl, 40%Glycerol, 0.01% sodium azide and 0.05% BSA.

### Storage:

Store at -20°C. Stable for 12 months from date of receipt.

### Clonality:

Polyclonal

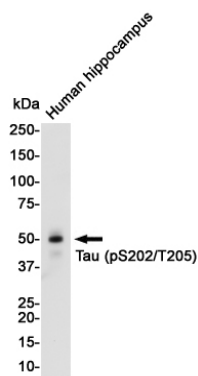
**Ig Type:**Rabbit IgG

### Applications

WB: 1/1000

IP: 1/20

## Validations



Western blot detection of Tau (Phospho-Ser202/Thr205) in Human Fetal brain cell lysates using Tau (Phospho-Ser202/Thr205) Rabbit pAb(1:1000 diluted). Predicted band size: 79KDa. Observed band size: 50-80KDa.