

Anti-c-Jun Rabbit antibody



Catalog Number: 167536

Product name

Anti-c-Jun Rabbit antibody

Specificity

Human, Mouse, Rat

Antibody description

c-Jun Rabbit polyclonal antibody

Preparation

Antigen: A synthetic peptide of human c-Jun

Formulation

Supplied in 50nM Tris-Glycine(pH 7.4), 0.15M NaCl, 40%Glycerol, 0.01% sodium azide and 0.05% BSA.

Storage

Store at -20°C. Stable for 12 months from date of receipt.

Clonality

Polyclonal

Ig Type

Rabbit IgG

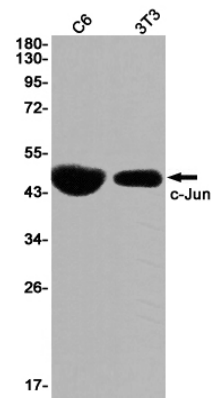
Applications

WB, IP

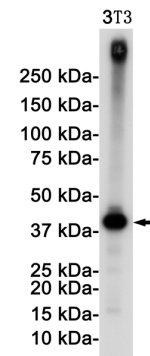
Dilutions

WB: 1/1000

Validations



Western blot detection of c-Jun in C6,3T3 cell lysates using c-Jun Rabbit pAb(1:1000 diluted).Predicted band size:36KDa.Observed



band size:48,43KDa.

Western blot detection of c-Jun in 3T3 cell lysates using c-Jun Rabbit pAb(1:1000 diluted).Predicted band size:36KDa.Observed band size:48,43KDa.