

Anti-Phospho-AKT (Ser473) Rabbit antibody



Catalog Number: 167529

Product name

Anti-Phospho-AKT (Ser473) Rabbit antibody

Specificity

Human, Mouse, Rat

Antibody description

Phospho-AKT (Ser473) Rabbit polyclonal antibody

Preparation

Antigen: A synthesized peptide derived from human Phospho-Akt(Ser473)

Formulation

Rabbit IgG in phosphate buffered saline , pH 7.4, 150mM NaCl, 0.02% sodium azide and 50% glycerol.

Storage

Store at 4°C short term. Store at -20°C long term. Avoid freeze / thaw cycle.

Clonality

Polyclonal

Ig Type

Rabbit IgG

Applications

WB, IHC-P, ICC/IF

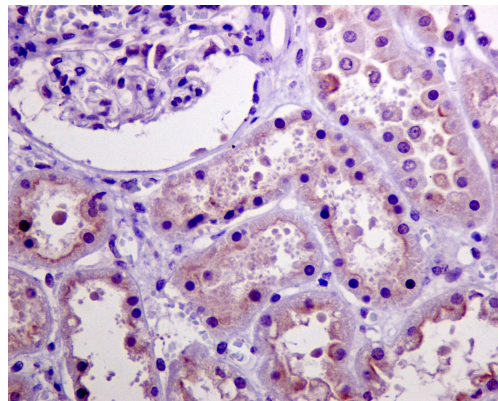
Dilutions

WB: 1/500-1/2000

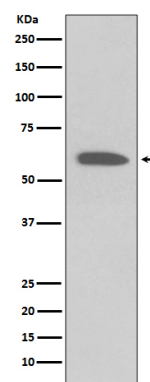
IHC: 1/50-1/200

ICC/IF: 1/100-1/500

Validations

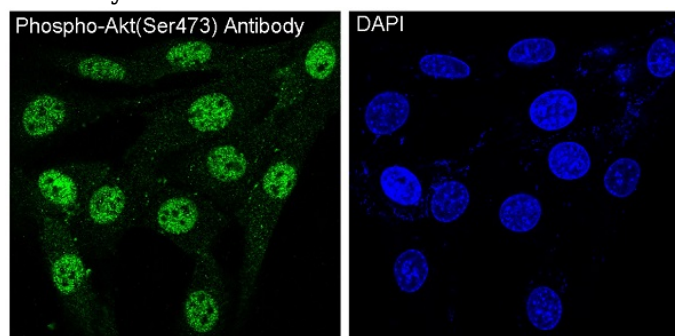


Immunohistochemical analysis of paraffin-embedded human kidney, using Phospho-



Akt(Ser473) Antibody.

Western blot analysis on 2 NIH/3T3 cell lysate treated with PDGF using Phospho-Akt(Ser473) Antibody.



Immunofluorescent analysis of NIH/3T3 cells treated with PDGF, using Phospho-Akt(Ser473) Antibody.