

# Anti-Beclin 1 Rabbit antibody

Catalog Number: 167525

## Product name

Anti-Beclin 1 Rabbit antibody

## Specificity

Human, Mouse, Rat

## Antibody description

Beclin 1 Rabbit polyclonal antibody

## Preparation

Antigen: A synthesized peptide derived from human Beclin 1

## Formulation

Rabbit IgG in phosphate buffered saline , pH 7.4, 150mM NaCl, 0.02% sodium azide and 50% glycerol.

## Storage

Store at 4°C short term. Store at -20°C long term. Avoid freeze / thaw cycle.

## Clonality

Polyclonal

## Ig Type

Rabbit IgG

## Applications

WB, IHC-P, ICC/IF, IP

## Dilutions

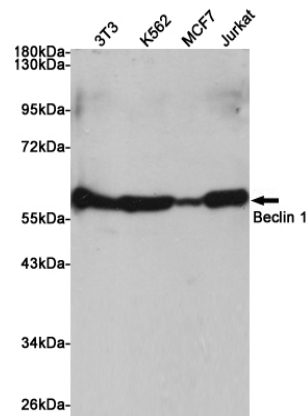
WB: 1/500-1/2000

IHC: 1/50-1/200

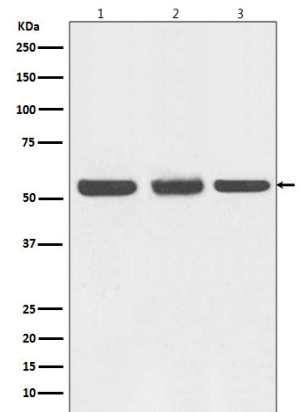
ICC/IF: 1/50-1/200

IP: 1/20

## Validations

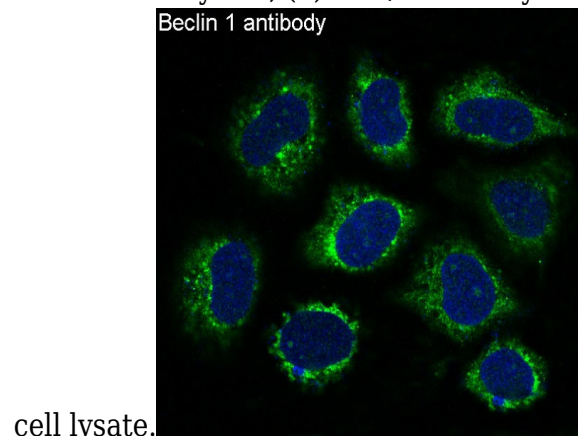


Western blot analysis of extracts from 3T3, K562, MCF7 and Jurkat cells using Beclin 1 Rabbit pAb at 1:1000 dilution. Predicted band size: 55kDa.



Observed band size: 60kDa.

Western blot analysis of Beclin 1 expression in (1) HEK293 cell lysate; (2) NIH/3T3 cell lysate; (3) C6



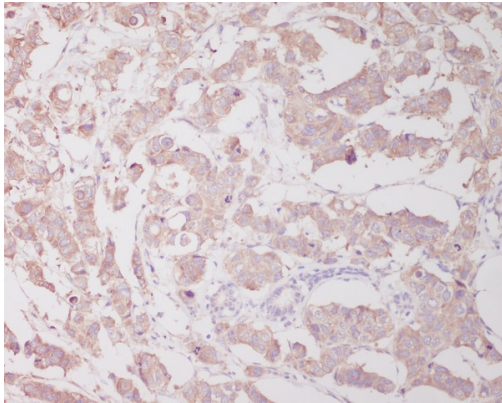
cell lysate.

Immunofluorescent analysis of HeLa cells, using Beclin 1 Antibody.

# Anti-Beclin 1 Rabbit antibody

Catalog Number: 167525

---



Immunohistochemical analysis of paraffin-embedded human breast cancer, using Beclin 1 Antibody.