

# Anti-SIRT2 Rabbit antibody



Catalog Number: 167515

## Product name

Anti-SIRT2 Rabbit antibody

WB: 1/1000

IHC: 1/20-1/500

## Specificity

Human, Mouse, Rat

IP: 1/20

## Antibody description

SIRT2 Rabbit polyclonal antibody

## Preparation

Antigen: Recombinant protein of human SIRT2

## Formulation

Supplied in 50nM Tris-Glycine(pH 7.4), 0.15M NaCl, 40%Glycerol, 0.01% sodium azide and 0.05% BSA.

## Storage

Store at -20°C. Stable for 12 months from date of receipt.

## Clonality

Polyclonal

## Ig Type

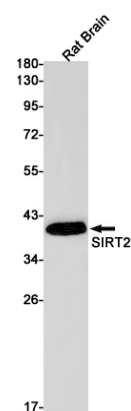
Rabbit IgG

## Applications

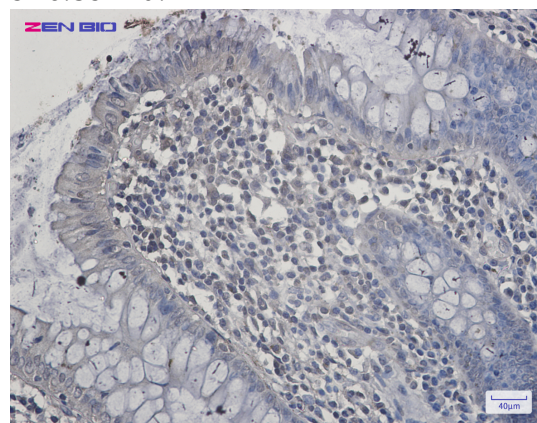
WB, IHC-P, IP

## Dilutions

## Validations



Western blot detection of SIRT2 in Rat Brain lysates using SIRT2 Rabbit pAb(1:1000 diluted). Predicted band size:43kDa.Observed band size:39kDa.



Immunohistochemistry of SIRT2 in paraffin-embedded Human colon cancer tissue using SIRT2 Rabbit pAb at dilution 1/20