

Anti-Myelin Basic Protein Rabbit antibody



Catalog Number: 167514

Product name

Anti-Myelin Basic Protein Rabbit antibody

Specificity

Human

Antibody description

Myelin Basic Protein Rabbit polyclonal antibody

Preparation

Antigen: A synthesized peptide derived from human Myelin Basic Protein

Formulation

Rabbit IgG in phosphate buffered saline , pH 7.4, 150mM NaCl, 0.02% sodium azide and 50% glycerol.

Storage

Store at 4°C short term. Store at -20°C long term. Avoid freeze / thaw cycle.

Clonality

Polyclonal

Ig Type

Rabbit IgG

Applications

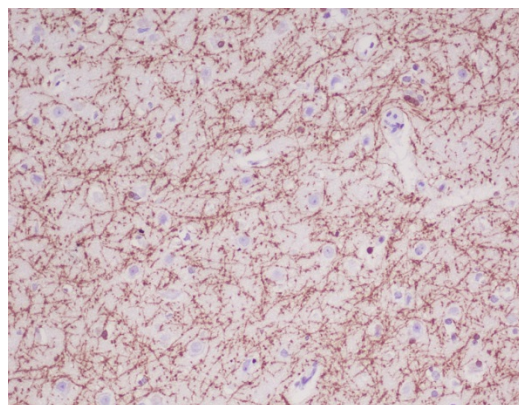
WB, IHC-P

Dilutions

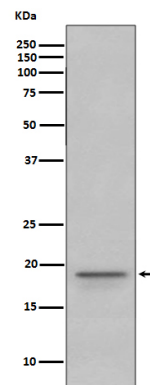
WB: 1/500-1/2000

IHC: 1/50-1/200

Validations



Immunohistochemical analysis of paraffin-embedded human brain, using Myelin Basic



Protein Antibody.

Western blot analysis of Myelin Basic Protein expression in Human fetal brain lysate.