

# Anti-RPL7 Rabbit antibody

Catalog Number: 167508

## Product name

Anti-RPL7 Rabbit antibody

## Specificity

Human, Mouse, Rat

## Antibody description

RPL7 Rabbit polyclonal antibody

## Preparation

Antigen: The antiserum was produced against synthesized peptide derived from human RPL7. AA range:199-248

## Formulation

PBS containing 50% glycerol, 0.5% BSA and 0.02% sodium azide.

## Storage

Store at 4°C short term. Store at -20°C long term. Avoid freeze / thaw cycle.

## Clonality

Polyclonal

## Ig Type

Rabbit IgG

## Applications

WB, IHC-P, ELISA

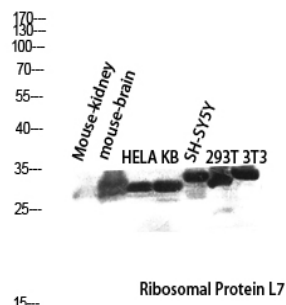
## Dilutions

WB: 1/500 - 1/2000

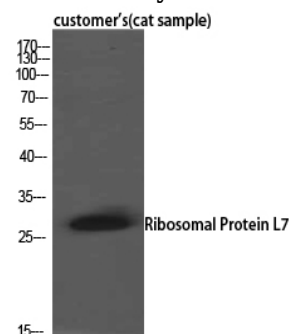
IHC: 1/100 - 1/300

ELISA: 1/10000

## Validations

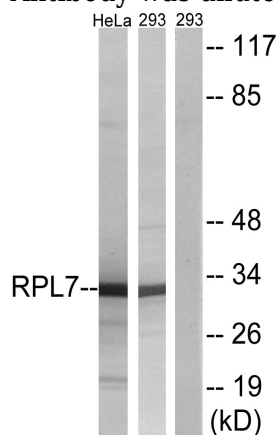


Western blot analysis of Mouse-kidney mouse-brain HELA KB SH-SY5Y 293T 3T3 lysis using Ribosomal Protein L7 antibody. Antibody was



diluted at 1:2000

Western Blot analysis of customer's (cat sample) using Ribosomal Protein L7 Polyclonal Antibody. Antibody was diluted at 1:2000

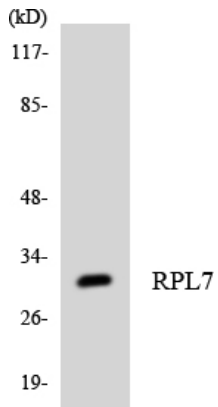


Western blot analysis of lysates from 293 and HeLa cells, using RPL7 Antibody. The lane on the right is blocked with the synthesized peptide.

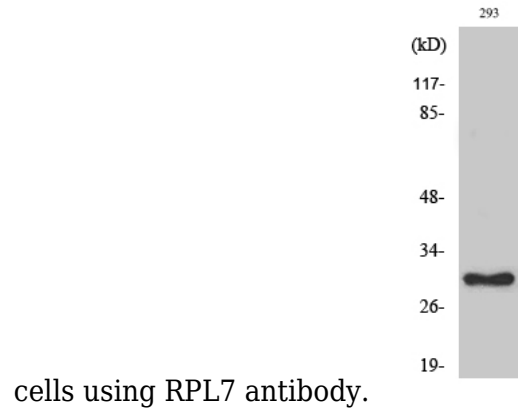
# Anti-RPL7 Rabbit antibody



Catalog Number: 167508



Western blot analysis of the lysates from K562



cells using RPL7 antibody.

Western Blot analysis of various cells using Ribosomal Protein L7 Polyclonal Antibody diluted at 1:2000