

Anti-Muscarinic Acetylcholine Receptor 2/CM2 Rabbit antibody



Catalog Number: 167499

Product name

Rabbit IgG

Anti-Muscarinic Acetylcholine Receptor 2/CM2 Rabbit antibody

Applications

WB, IHC-P, IP

Specificity

Human, Mouse, Rat

Dilutions

WB: 1/1000-1/5000

Antibody description

Muscarinic Acetylcholine Receptor 2/CM2 Rabbit polyclonal antibody

IHC: 1/20-1/100

IP: 1/20-1/50

Preparation

Antigen: A synthetic peptide of human Muscarinic Acetylcholine Receptor 2

Validations

Formulation

Supplied in 50nM Tris-Glycine(pH 7.4), 0.15M NaCl, 40%Glycerol, 0.01% sodium azide and 0.05% BSA.

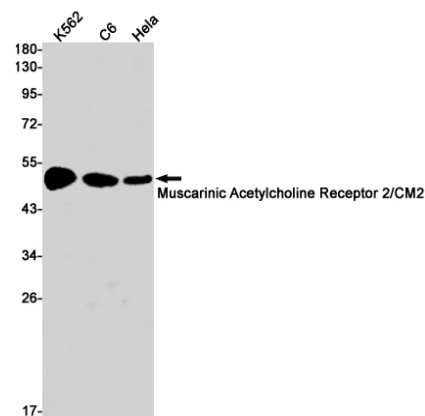
Storage

Store at -20°C. Stable for 12 months from date of receipt.

Clonality

Polyclonal

Ig Type



Western blot detection of Muscarinic Acetylcholine Receptor 2/CM2 in K562, C6, HeLa cell lysates using Muscarinic Acetylcholine Receptor 2/CM2 Rabbit pAb(1:1000 diluted). Predicted band size: 52kDa. Observed band size: 52kDa.